

NAVCANlink

*Providing reliable, real-time
airfield data to airport service
providers and operators.*



Fully integrated with NAVCANsuite products, NAVCANlink is an interactive, web-based visualization tool for aerodrome data. It provides users – such as terminal operations staff, airport operations, and air carrier operations managers – with a near-real-time view of an airport’s radar, traffic, weather, airfield lighting, and NAVAID status using the same reliable information as that of air traffic control personnel.

NAVCANlink is an invaluable tool that provides access to:

- Airport Performance Monitoring (APM) information, both current and historic, to identify aircraft movement efficiencies
- Surveillance Monitoring information, including Gate and Surface events, to allow analysis of traffic flow around the aerodrome
- Automatic Data Acquisition Processing System (ADAPS) data
- Notice to Airmen (NOTAM) and ICAO NOTAM data

With NAVCANlink, users can view dynamic content and radar positioning of targets with the Situation Display and Collaborative Decision Maker (CDM) on a customizable map of the aerodrome and surrounding surfaces. It also includes a record and playback function for situation analysis.

Configurable gadgets provide at-a-glance overviews and allow users to monitor relevant data and events in conjunction with the aerodrome map, or in a customizable dashboard display. A Web Chat tool supports communication and collaboration between different stakeholders.

NAVCANlink can be accessed from web browsers, making vital airfield information available virtually anywhere, and its robust system architecture can meet the most challenging security, performance and availability requirements.

Product Benefits

NAVCANlink is a robust, operationally proven system that offers the following benefits:

- Airport operators and service providers can collaborate using common tools and consistent information
- Improves airport efficiency and reduces aircraft turn-around time
- Offers a quick view of airfield operations, identifying impediments to airfield asset performance
- Facilitates the optimization of airfield asset usage and performance
- Supports investigations of performance reductions and incursions using situation replays
- Eliminates client-side installations and maintenance, reducing maintenance and ownership costs
 - No special hardware – uses a general-purpose computer
 - Accessible from any computing platform or portable device running a compliant web browser
 - No client software installation
- Fully integrated with other NAVCANsuite applications
- Provides data download and external access for additional/third-party processing
- Offers multiple language support

Feature Summary

Airfield Situation Display

- Presents a detailed aerodrome map with adaptable layer display and user-configurable colour schemes
- Dynamically displays air and ground targets from surveillance data
- Offers configurable data tags (aircraft type, flight level, speed, destination aerodrome, callsign, departure aerodrome, gate)
- Displays air and ground targets within range of the airfield
- Filters tracks according to airline carrier and type of flight (arrival, departure, local, overflight)
- Displays runway lighting status
- Aircraft monitor displays a real-time list of aircraft and the surfaces they are occupying
- Apron Monitor shows in real time the occupants of all defined aprons as they enter and leave
- De-Icing Bay Monitor tracks in real time as aircraft and vehicles enter or leave the defined region
- Gate Monitor shows Gate, Callsign, Type, Departure, Destination and Time In
- Runway and Segment Monitor tracks in real time, the occupants of defined runway and segment surfaces

Airfield Environment Information

- Indicates average wind speed and direction, and gusting
- Provides atmospheric pressure/altimeter settings
- Indicates Lighting and lightning strikes

Airport Performance Monitor

- The Airport Performance Monitor (APM) Summary window displays the total arrivals and departures for the past 10 hours, as well as the number of arrivals and departures in defined time intervals.
- The Ground Monitor provides information on arrivals and departures in a user-selectable time period:
 - Arrival summaries include arrival count and time on runway. Available per runway, in process, and an overall average
 - Departure summaries include departure count and time per departure segment. Available per runway, in process, and an overall average
 - Supports apron to taxiway, taxiway to de-icing, de-icing to taxiway and taxiway to line-up segments
- The Gridlock Monitor sets and monitors arrival and departure threshold indicating performance bottlenecks:
 - Ground count is available with adaptable, indicated thresholds based on arrival and departure trends
 - Provides graphical depictions of historical arrival and departure rates
- Flight History provides the history of a given flight for a given day using the flight's ACID

Airfield Asset Status

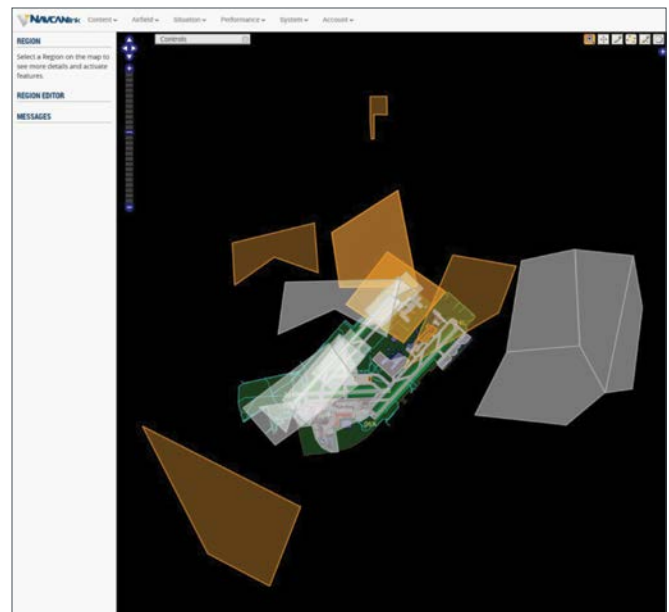
- Provides a runway's distance measuring equipment status
- Provides runway visual range distance
- Includes Edge Lighting Intensity Scale (0-5)
- Displays instrument landing system, localizer and glide path status

Situation Replay

- Replays any archived time-range
- Replays events forwards or backwards. Includes pause, rewind, fast forward, and fast backward.
- Loops through selected historical scenarios continuously

Surveillance-based event generation

A Locus application defines geographic regions on and around the aerodrome and their properties. The regions can be used for activities like automatic event generation and radar track filtering, tag visibility and position filtering and parking areas. The defined regions can be applied to both the CDM and the Situation Display. Regions may be used by a single user or a group of users.



Archive

- Archives 30 to 45 days of data
- Archived data is available for situation replay and reporting





Static Image and Document Display

- Displays paginated list of static images in a variety of formats

User Management

- Creates user accounts and assigns user permissions
- Configures user information and preferences:
 - First and last name, email address
 - Selects target colours for default, arrivals, departures, local traffic, and transit traffic
 - Filters tracks by airline; by arrivals and departures; and by local, transit, and other traffic
 - Selection of other traffic data tag content: callsign, level, speed, aircraft type, departure, destination, and gate

System Management

- Theme Manager controls colour scheme
- Job Scheduler schedules data extraction for third-party processing
- External data access via industry standard protocol (SOAP)

Data Feeds

- Surveillance data (RADAR ASTERIX CAT xxx)
- Aeronautical Data (NOTAM)
- Environment (wind and pressure sensors)
- Airfield assets (navigational and landing aids, lighting system)
- Flight and gate assignment data

NAVCANlink is a product of **NAVCANATM**, a leading line of integrated air traffic management products, applications and services. **NAVCANATM** products are operationally deployed at over 125 sites worldwide for safe, efficient and cost-effective air traffic management. For more information on NAVCANlink and other **NAVCANATM** products visit our website.

280 Hunt Club Road
Ottawa, Ontario, K1V 1C1
Canada
1 (613) 563-5588
info@navcanatm.ca
www.NAVCANATM.ca



NAVCANATM is a subsidiary of NAV CANADA